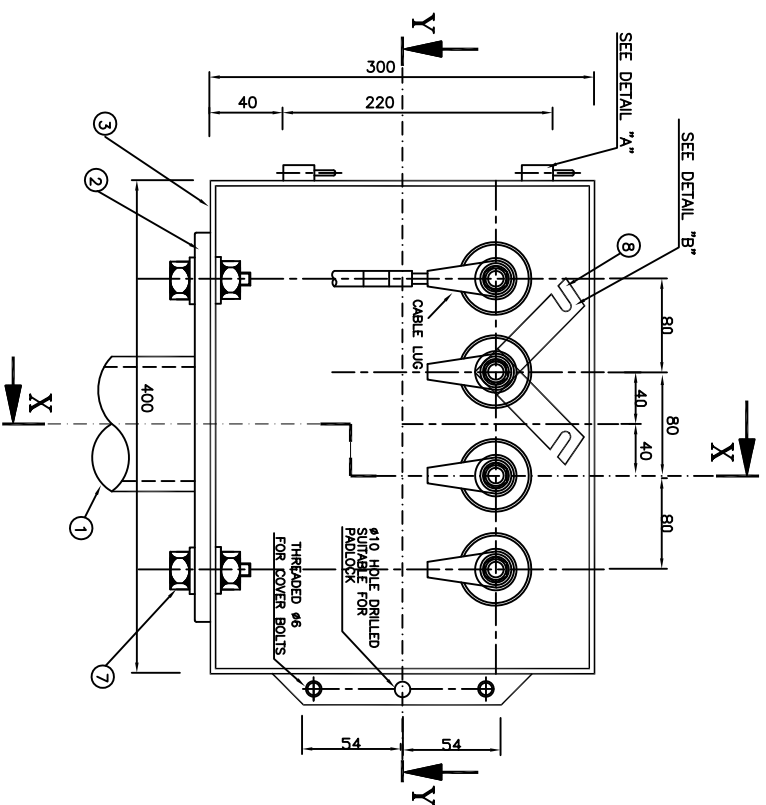


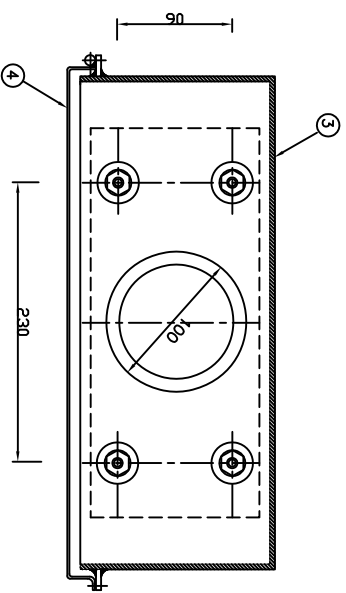
NOTES

- 1- ALL DIMENSIONS ARE IN MILLIMETERS UNLESS OTHERWISE SPECIFIED.
- 2- ALL BOLTS, NUTS AND WASHERS SHALL BE GALVANIZED.
- 3- AFTER ASSEMBLY OF TEST BOX TO MOUNTING PIPE & PRIOR TO INSTALLATION, ALL STEEL PARTS SHALL BE PAINTED WITH FOLLOWING PROCEDURE:
 - A) SURFACE PREPARATION TO S&2 1/2.
 - B) ONE RED LEAD PRIMER (70MICRONS).
 - C) ONE INTERMEDIATE COAT OF ALKYD PAINT (100 MICRONS AT LEAST) TO IPS-M-TP-130
 - D) ONE FINISHING COAT OF ALKYD GLOSSY YELLOW COLOR PAINT (100 MICRONS) TO IPS-M-TP-130; COLOR TO BS 381C, NO.309. (TOTAL THICKNESS OF PAINTING 100 MICRONS AT LEAST).
- 4- ALTERNATIVE INTERNAL FITTINGS MAY BE SUPPLIED SUBJECT TO APPROVAL.
- 5- THE PIPE SUPPORT SHALL NOT BE SUPPLIED BY THE BOXES' MANUFACTURER.
- 6- THIS TEST BOX IS TO BE USED MAINLY AS A NEGATIVE AND POSITIVE BOND BOX AND FOR ELECTRICAL CONNECTION OF TWO OR MORE PIPELINES.

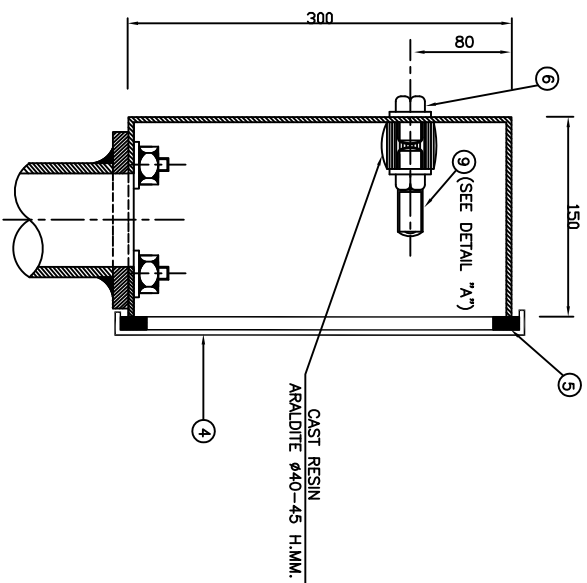
ITEM	MATERIALS	QTY.	SPECIFICATION
①	PIPE SUPPORT DN100(4")	1	STEEL PIPE (API 5L)
②	BOTTOM PLATE 300x130x3mm.	1	MILD STEEL
③	BOX	1	MILD STEEL 3mm. THK.
④	COVER	1	MILD STEEL 3mm. THK.
⑤	NEOPRENE GASKET	1	
⑥	BOLT WITH WASHER (M10x30)	4	
⑦	BOLT WITH WASHERS & NUT(M8x30)	4	
⑧	COPPER LINK	2	110x25x3mm.
⑨	THREADED STUD M10	4	BRASS
⑩	INSULATOR		



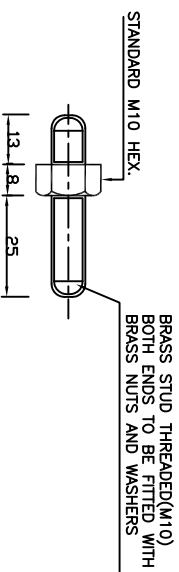
ELEVATION-COVER REMOVED



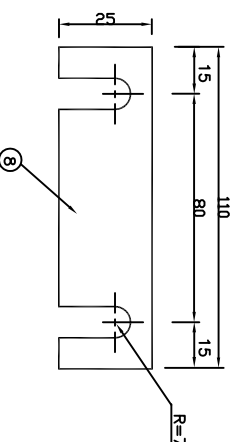
SECTION Y-Y



SECTION X-X



DETAIL "A" THREADED STUD



DETAIL "B" LINK

REV.	DESCRIPTION	DATE
A		

PG Pars Co.



CATHODIC PROTECTION SYSTEM
4 Terminals Bond Box

DATE	DRAWING No.	SHEET	REV.
	PGP-D-CP-203	1	2