

PG PARS CO.

MAGNESIUM ANODE

PG PARS magnesium anodes are manufactured in a comprehensive range of shapes and size to provide a wide selection for cathodic protection of buried and marine structures, storage tanks etc.

Anodes for buried pipelines, tanks and similar structures are normally supplied packaged in a cotton bag containing a rapid wetting, moisture retaining backfill which reduces the electrolyte resistivity adjacent to the anode and improves performance.

The most widely specification for magnesium anodes is ASTM B275, ASTM G97, IPS-M-TP750/2, BS 7361, ASTM A283 grade C.

Standard Backfill Composition:

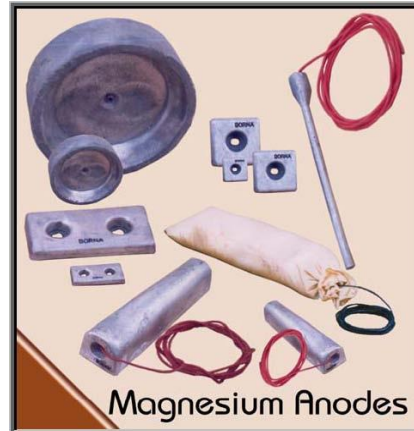
Powdered Gypsum	70%
Granular Bentonite	25%
Sodium Sulphate	5%

PG PARS magnesium anodes are also used for protection of offshore structures quay walls and for marine applications in ballast tanks and external ships hulls and rudder and heat exchangers protection.

PG PARS CO.

Chemical Properties:

Element	Standard	High Potential
Al	5.3-6.7	0.01 max
Zn	2.5-3.5	0.03 max
Mn	0.12 min	0.5-1.2
Cu	0.02 max	0.02 max
Ni	0.001 max	0.002 max
Fe	0.005 max	0.03 max
All others	0.01 max	0.3 max
Mg	Balance	Balance



Electrical Properties:

- Energy Capabilities: 1230 Ah/kg(min)
- Open Circuit Potential
Negative Volts: 1.7
(Cu/CuSO₄ Electrode)
- Current Efficiency
Standard: 58%
High Potential: 50%
- Consumption
7.3kg/amp-Year (max)

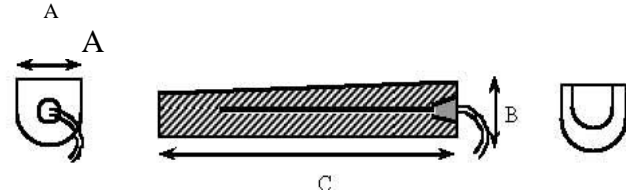
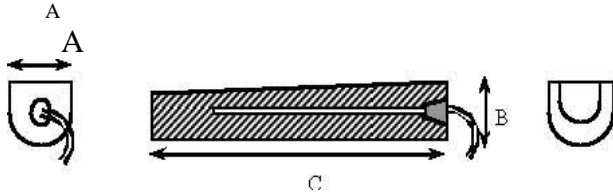
PG PARS CO.

High Potential :

Standard :

‘D’ Section

D’ Section

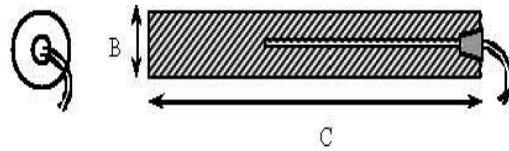
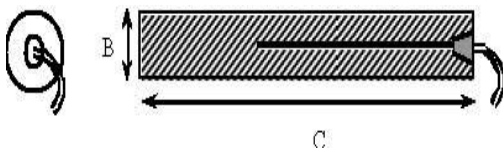


Code No.	Magnesium Weight (kg)	A mm	B mm	C mm	Total weight of Anode with Backfill (kg)
MH002G4	2.3	89	92	203	7.3
MH004G4	4.1	89	92	441	11.4
MH008G4	7.7	114	114	527	18.2
MH010G4	10.0	122	122	559	23.6
MH014G4	14.5	148	135	603	29.5
MH023G4	23.2	159	164	622	57.3
MH027G4	27.3	108	102	1524	Unpacked

Code No.	Magnesium Weight (kg)	A mm	B mm	C mm	Total weight of Anode with Backfill (kg)
MS002G4	2.3	89	92	203	7.3
MS004G4	4.1	89	92	441	11.4
MS008G4	7.7	114	114	527	18.2
MS010G4	10.0	122	122	559	23.6
MS014G4	14.5	148	135	603	29.5
MS023G4	23.2	159	164	622	57.3
MS027G4	27.3	108	102	1524	Unpacked

‘Circular’ Section

‘Circular’ Section



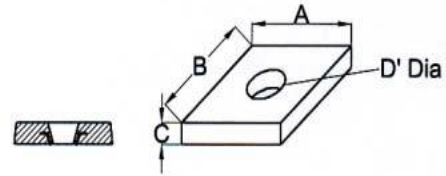
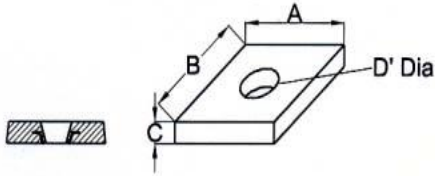
Code No.	Magnesium Weight (kg)	B mm	C mm	Total weight of Anode with Backfill (kg)
MH008G3	7.65	90	690	20
MH010G3	10.0	108	622	23.6
MH023G3	22.74	200	425	56.3

Code No.	Magnesium Weight (kg)	B mm	C mm	Total weight of Anode with Backfill (kg)
MS008G3	7.65	90	690	20
MS010G3	10.0	108	622	23.6
MS023G3	22.74	200	425	56.3

PG PARS CO.

‘Condenser Boxes & Process Plant’

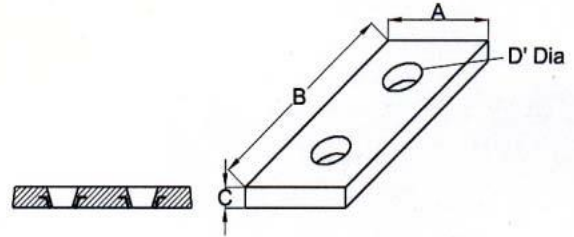
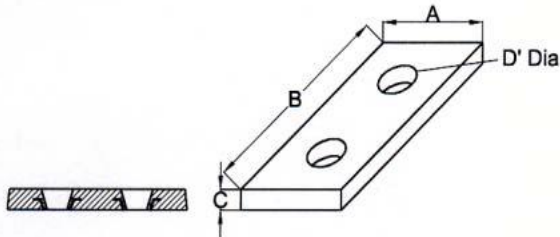
‘Condenser Boxes & Process Plant’



Code No.	Weight (kg)	A mm	B mm	C mm	D mm
MH001E1	1.1	150	150	30	60
MH000E1	0.3	100	100	20	45
MH001E1	1.5	150	150	40	60
MH003E1	2.7	200	200	40	60

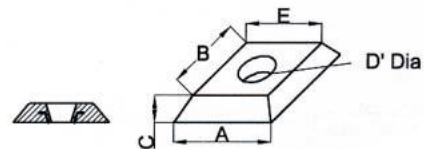
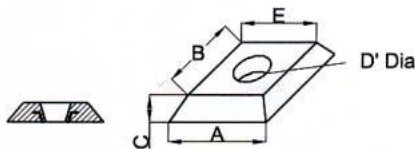
OFFER

Code No.	Weight (kg)	A mm	B mm	C mm	D mm
MS001E1	1.1	150	150	30	60
MS000E1	0.3	100	100	20	45
MS001E1	1.5	150	150	40	60
MS003E1	2.7	200	200	40	60



Code No.	Weight (kg)	A mm	B mm	C mm	D mm
MH002E2	2.2	150	300	30	60
MH000E2	0.6	100	200	20	45
MH003E2	3	150	300	40	60
MH005E2	5.4	200	400	40	60

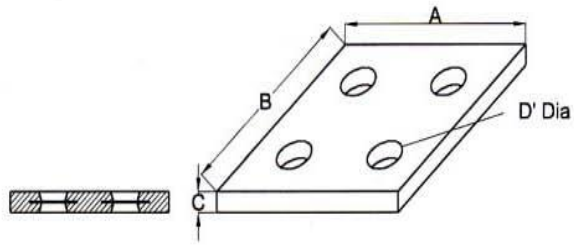
Code No.	Weight (kg)	A mm	B mm	C mm	D mm
MS002E2	2.2	150	300	30	60
MS000E2	0.6	100	200	20	45
MS003E2	3	150	300	40	60
MS005E2	5.4	200	400	40	60



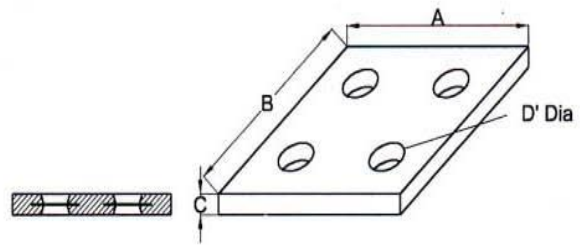
Code No.	Weight (kg)	A mm	B mm	C mm	D mm	E Mm
MH004E5	3.6	205	240	52	65	15

Code No.	Weight (kg)	A mm	B mm	C mm	D mm	E Mm
MS004E5	3.6	205	240	52	65	15

PG PARS CO.



Code No.	Weight (kg)	A mm	B mm	C mm	D mm
MH003E6	2.9	420	420	10	40
MH001E6	1.4	300	300	10	40



Code No.	Weight (kg)	A mm	B mm	C mm	D mm
MS003E6	2.9	420	420	10	40
MS001E6	1.4	300	300	10	40

The following drawings show typical magnesium anodes from **PG PARS Co. Ltd** however we can supply other shapes and sizes to customer's own requirements.

PG PARS Electronics Co.
Tel: +98(21)66758691-2,
Fax: +98(21)66758693,
Email: info@pgpars.com,
web: www.pgpars.com