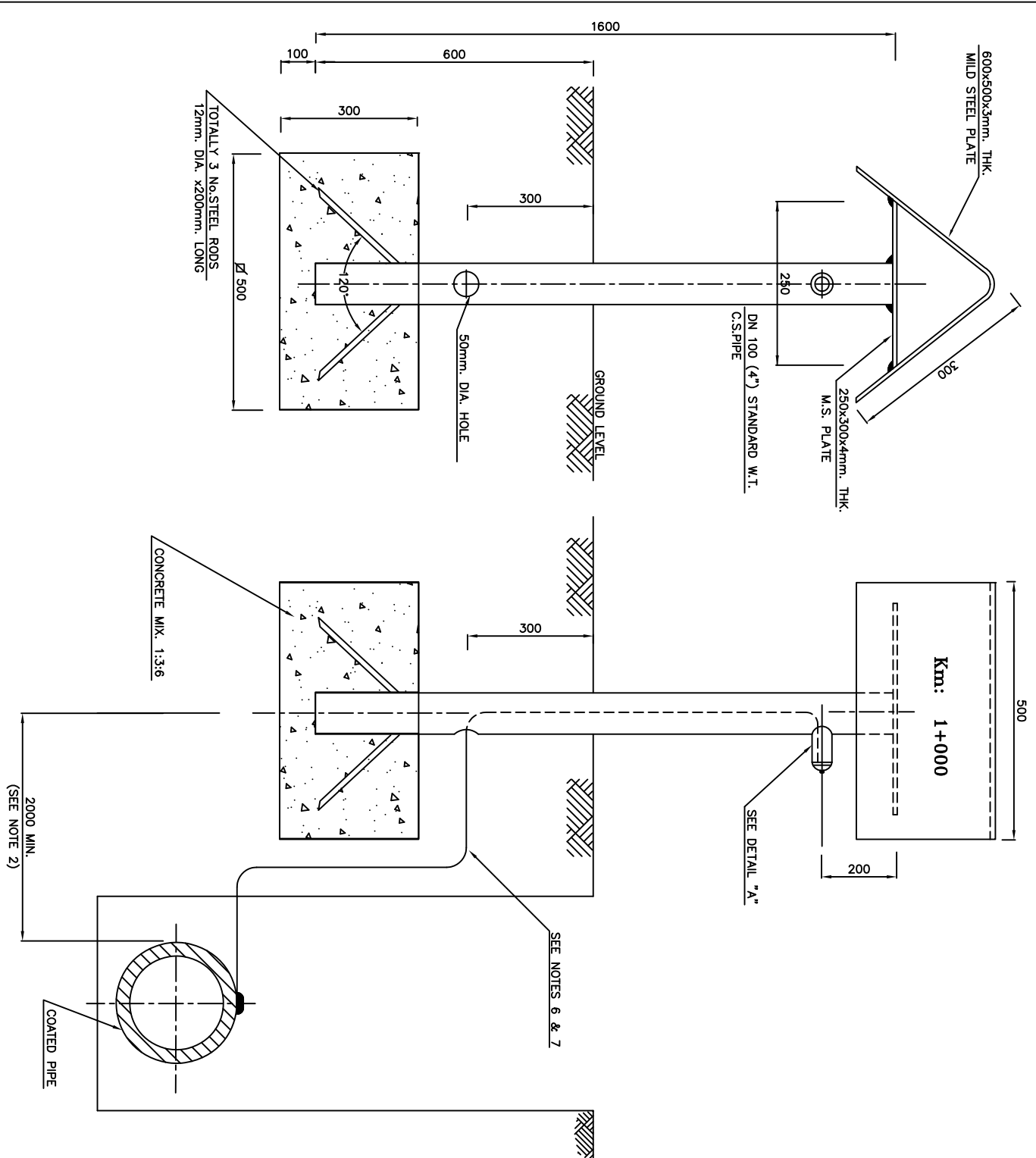


NOTES

- 1- ALL DIMENSIONS ARE IN mm. UNLESS OTHERWISE NOTED.
- 2- THE MARKER SHALL BE INSTALLED AT SAFE LOCATION.
- 3- THE MARKER PLATE, TERMINAL CONNECTION AND MOUNTING PIPE SHALL BE CLEANED, PRIMED AND PAINTED WITH THE FOLLOWING PROCEDURE:
 - A) SURFACE PREPARATION TO Sa 2 1/2.
 - B) ONE RED LEAD PRIMER (70 MICRONS) TO IPS-M-TP-115
 - C) ONE INTERMEDIATE COAT OF ALKYL PAINT (100 MICRONS) TO IPS-M-TP-130
 - D) ONE FINISHING COAT OF ALKYL GLOSSY YELLOW COLOR PAINT(100 MICRONS) TO IPS-M-TP-130; COLOR TO BS 381C, No.309. (TOTAL THICKNESS OF PAINTING 270 MICRONS AT LEAST).
- 4- ALL BURIED METALLIC PARTS SHALL BE COATED WITH MASTIC (3mm.) TO IPS-M-TP-105
- 5- THE Km. NUMBER SHALL BE CLEARLY MARKED IN "FARSI" AND "ENGLISH" ON BOTH SIDES BY USING OILY BLACK PAINT.
- 6- THE CABLE LENGTH SHALL BE SPECIFIED BY THE DESIGNER OF CP SYSTEM WITH REFERENCE TO THE SIZE OF PIPE LINE.
- 7- THE CABLE SIZE DEPENDS UPON DESIGN CONDITIONS.
- 8- CHANGES ON DIMENSIONS OF CONCRETE BASE ARE PERMITTED SUBJECT TO LOCAL SUBSOIL CONDITIONS AND APPROVAL OF SITE ENGINEER.



REV.	DESCRIPTION	DATE
C		
B		
A		

PG Pars Co.

**CATHODIC PROTECTION SYSTEM
TRANSMISSION LINE POTENTIAL TEST POINT
AND PIPE MARKER**

DATE	DRAWING No.	SHEET	REV.
	PGP-D-CP-210	1	2